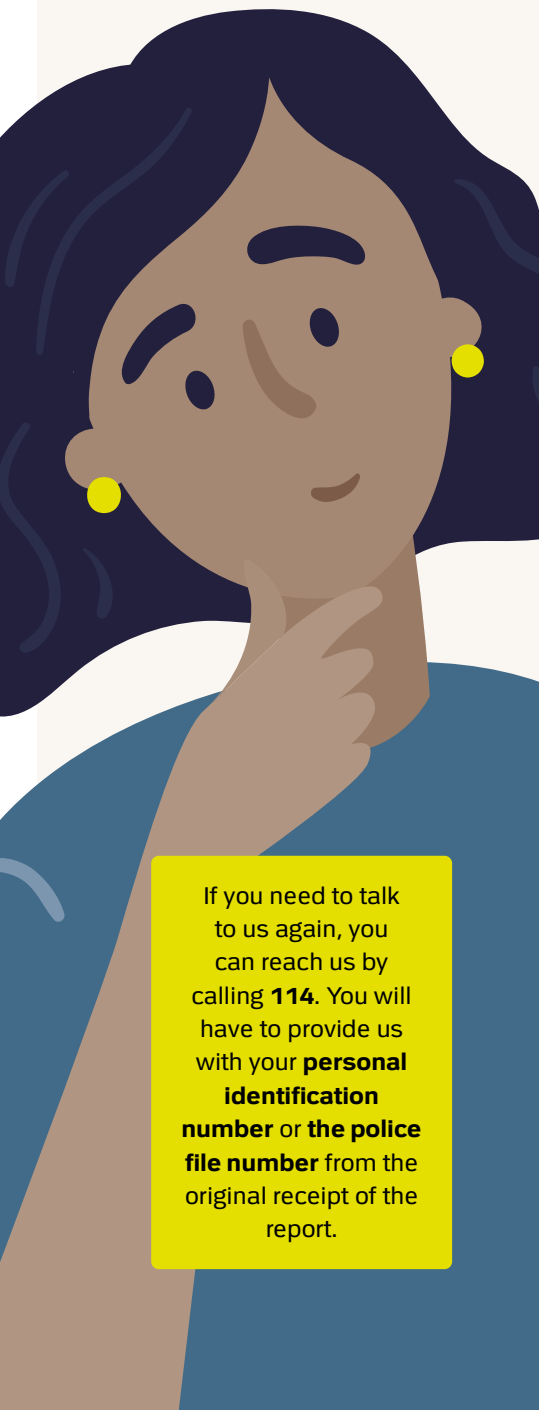


After you have reported to the police

Here you can read more about what happens after the police have received your report.



You get a receipt of the report

You will get a receipt of the report in your e-Boks and at borger.dk. If you do not have digital post, you will get the receipt by ordinary mail.

In the receipt you can find a police file number for the case. Please always refer to this number if you have to contact the police regarding the case.

The receipt can also be used as documentation for your insurance company.

In the receipt you will be designated as "the injured party" of the case.

Next step in the case will be that the case will have to be investigated unless you have been informed that the police have no basis for initiating an investigation.

If you need to talk to us again, you can reach us by calling **114**. You will have to provide us with your **personal identification number** or the **police file number** from the original receipt of the report.



We investigate and assess the case

During the investigation the police will gather evidence and interrogate the person or persons who may be relevant for the case.

If there is no basis for a preliminary charge, you will receive a message that the case is closed.

If there is a reasonable suspicion towards a person, this person is indicted. Once the investigation is completed, the case will be forwarded to the Prosecution Service.

Thereafter, the Prosecution Service takes over the case. In less severe cases, the case can be closed with a fine and without court proceedings.

If there is not enough evidence in the case, you will receive a message that the case is closed. Otherwise, the case is typically decided in court.



The court processes and decides the case

If the case has to be taken to court, the court decides if the defendant is guilty or not and if found guilty which punishment the defendant should receive.

If you have to give evidence in court, you will receive a letter summoning you as a "witness". If you do not have to give evidence, you will still be given an opportunity to receive information about where and when the case will be presented in court.

When your case is closed, you can request the court or the Prosecution Service for a copy of the judgment.

At anklagemyndigheden.dk/en you can read and learn about how a court case is processed and what it means to be a witness in court.

Know your entitlements

You have different options to get help and support, depending on the type of crime you have been exposed to.

// Compensation

Your possibilities of being compensated depend on the nature and severity of the crime.

- **If you have been injured, e.g., as a consequence of violence,** you may in some cases be eligible for compensation from the Danish state. You can apply for compensation by filling in an electronic application form at **erstatningsnævnet.dk**. Here, you can also find further information reading concerning the conditions for being compensated. You will need your NemID and the police case file number which can be found on the police notification receipt sent to you by the police. **If you are not able to apply digitally, you may contact the Department of Civil Affairs, which is the secretariate of the Criminal Injuries Compensation Board, on phone number +45 33 92 33 34.**
- **If the criminal case is to be tried in court,** please note that you should **claim compensation from the offender in court** as, in general, this is a condition for being eligible for compensation from the Board.
- **If you have been the victim of, e.g., theft, burglary or criminal damage,** you must contact your own insurance company concerning compensation. Should your case be tried in court, you may also ask the police to include your claim for compensation in the trial.

// Contact person

In some cases, e.g. sexual offence or gross violence cases, you will get a contact person within the police. The contact person will help and support you throughout the process and keep you informed about the development of the case.

// Legal advocate

In some cases you may have an opportunity to receive legal support, i.e. an advocate who will help you and represent you throughout the entire case.

// Other possibilities of obtaining assistance

Regardless of the crime or accident of which you have been the victim, you can get counselling services and support from **the victim counselling office** (Offerrådgivningen). Find a department at **politi.dk/ofre** or **call phone number 116 006** (manned around the clock). At **politi.dk/ofre** you can also find information about and links to other relevant organisations who can help and support.

// Get help at **politi.dk/ofre**

Read more about your options and receive useful answers to the most common questions as a result of being a victim of a crime or assault.

You can always call

1

1

4

and get help and guidance.